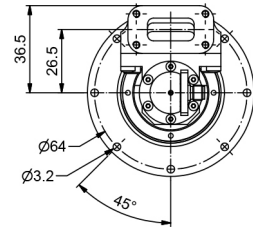
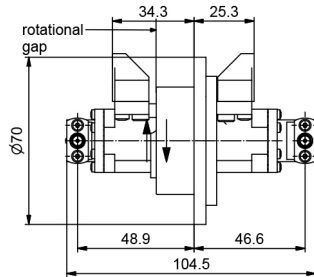


# OWG200U-R120-14.5GHz



## RF channel characteristics

Channel designation	Channel 1	Channel 2
Interfaces	R120 special flange	SMA-F (50Ω)
Style	I	U
Frequency range	14.0-14.5 GHz	DC-2.05 GHz
Peak power , max	10 KW	-
Average power , max	100 W	10W
VSWR , max .	1.2	1.2
VSWR WOW . max	0.1	0.05
Insertion loss . max	0.2dB	0.4dB
Insertion loss WOW . max	0.05dB	0.1dB
Isolation	60dB	60dB
Phase WOW . max	1 deg	1 deg

Conditions : Operating altitude if not pressurized max 1000 m

## General mechanical data

Rotating speed . max	60 rpm
Life . min	10 x 10 <sup>6</sup> revolutions
Torque . max	0.20 Nm@room temperature
Case material	aluminum alloy
Case surface finish	chromate conversion coat
Weight , approx	0.4 kg

## General environmental conditions Operation

---

Ambient temperature range	-40°C~+70°C
Relative humidity , max	95%
IP protection level	IP64