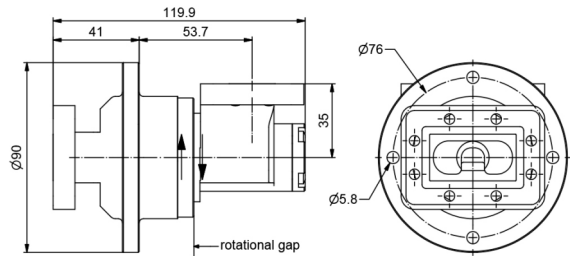


OWG100L-CPR137-G-M4-6.725GHz



RF channel characteristics

Interfaces	CPR 137 / G with thread M4
Style	L with corpus interface in-line
Frequency range	5.850-6.725 GHz
Peak power , max	10 KW
Average power . max	3.5 kw
VSWR . max	1.15
VSWR WOW . max	0.05
Insertion loss . max	0.1 dB
Insertion loss WOW . max	0.05 dB
Phase WOW . max	2 deg

General mechanical data

Differential operating pressure, nom	2 x 105 Pa (2 . 0 ban)
Leakage rate, max	10 cm3 / minute
Rotating speed, max	120 rpm
Life. min	10 x 106 revolutions
Starting torque, max	0.7 Nm@room temperature
Torque during rotation, max	0.8 Nm@ room temperature
Case material	aluminum alloy
Case surface finish	chromate conversion coat
Weight, approx	0 . 8 kg

General environmental conditions Operation

Ambient temperature range	-40°C~+70°C
Relative humidity , max	95%
IP protection level	IP64