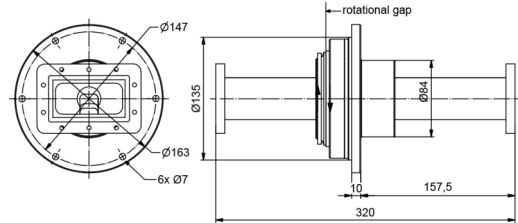
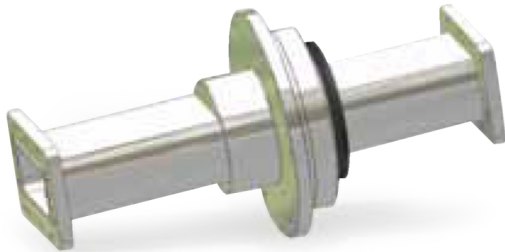


OWG100-CPR284-G-2.9GHz



RF channel characteristics

Interfaces	CPR 284 / G
Style	I
Frequency range	2.70-2.90 GHz
Peak power , max	1 MW
Average power . max	1 kw
VSWR . max	1.2
VSWR WOW . max	0.05
Insertion loss . max	0.2 dB
Insertion loss WOW . max	0.05 dB
Phase WOW . max	3 deg
Conditions: Operating altitude if not pressurized, max 2000 m	

General mechanical data

Differential operating pressure, nom	2 x 10 ⁵ Pa (2 . 1 bar)
Leakage rate, max	20 cm ³ / minute
Rotating speed, max	10 rpm
Life. min	6 x 10 ⁶ revolutions
Starting torque, max	5Nm@ room temperature
Torque during rotation, max	5Nm@room temperature
Case material	aluminum alloy
Case surface finish	painting dark grey (RAL 7021)
Weight, approx	2.4 kg

General environmental conditions Operation

Ambient temperature range	0°C~+55°C
Relative humidity , max	95%
IP protection level	IP65