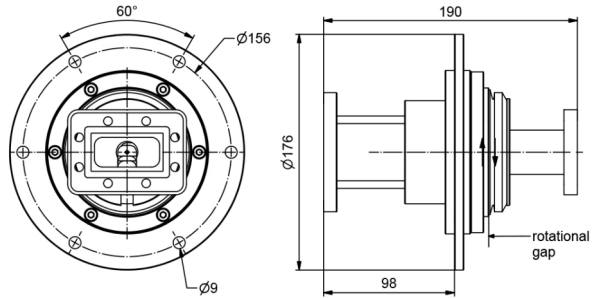
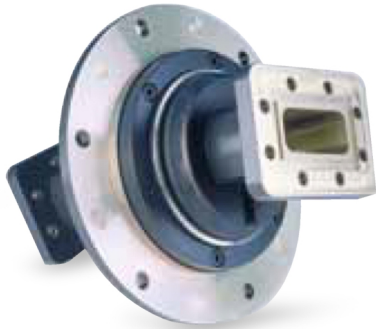


OWG100-CPR187-G-5.9GHz



RF channel characteristics

Interfaces	CPR 187 / G
Style	I
Frequency range	5.4-5.9 GHz
Peak power , max	1.1 MW
Average power . max	4 KW
VSWR . max	1.2
VSWR WOW . max	1.05
Insertion loss . max	0.2 dB
Insertion loss WOW . max	0.05 dB
Phase WOW . max	3 deg

General mechanical data

Differential operating pressure, nom	2.1x10 ⁵ Pa(2.1bar)
Leakage rate, max	20 cm ³ /minute
Rotating speed, max	10 rpm
Life. min	6X10 ⁶ revolutions
Starting torque, max	5 Nm@room temperature
Torque during rotation, max	5 Nm@room temperature
Case material	aluminum alloy
Case surface finish	painting dark grey (RAL 7021)
Weight, approx	2.4kg

General environmental conditions Operation

Ambient temperature range	0°C~+55°C
Relative humidity , max	95%
IP protection level	IP65